

BLUE BRAIN

Kuldeep Singh¹, Vanijaya Sharma²

¹ccsit ,tmu,mordrabad

²ccsit ,tmu,mordrabad

Kuldeepsinghana06@gmail.com

vanijayasharmajnu@gmail.com

Abstract— The human brain is the most precious of God's creatures. Men are called intelligent by the brain. Today we are created because we can think other animals can not do it. But we lose the knowledge of the brain when the body is destroyed after the death. This knowledge can be used for social development. What if we make a brain and store the content of the brain in it?"Blue Brain" - the first name of the brain in the world. It means a machine that can function as a human brain. Scientists are now studying to create artificial brain that can think, react, make decisions, and save everything in memory. The main purpose is to get the human brain into the machine. For anyone to think, make a decision effortlessly. After the body's death, the virtual brain acts as a person. So even after death, we will not lose consciousness, reason, personality, emotion and memory of this person that can be used to develop human society. No one has ever understood the complexity of the human brain. It's complicated from any chain in the world.

I. INTRODUCTION

Brain is the most powerful part of human body that is gives by the god.Besause the brain is the part of our body which do separate us to the Animals and other things.The brain makes a person intelligent but our knowledge of brain will be lossed when the body of person will be destroy.So, the IBM takes the decision to make a brain that is do the work at the basis of computer and it will be never die.The Blue Brain is the combination of person body and IT technology that makes to a person more intelligent.

II. What is blue brain?

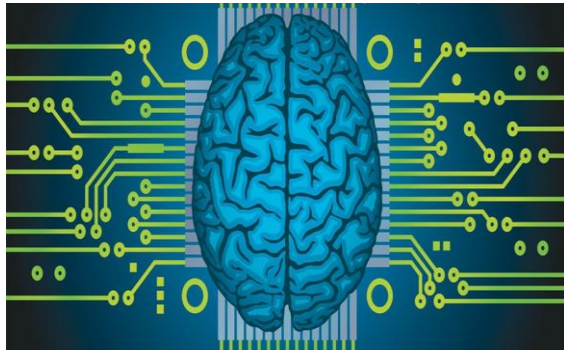
As the basis of IBM the Blue Brain it the combination of human body and the computer technology. The IBM is developed a virtual brain at this time that is called Blue Brain and it the first virtual Brain in the world. After 30-40 years , we will scan our knowledge into a computer.



III. Virtual brain

Virtual Brain is a machine that's use for designing the function of brain to take decision.

- What is the thinking.
- What is the response after asking the question.
- How the behavior with other person.
- How it feel the emotions and how it is controlled our emotions.



IV. Need of virtual brain

As we know that the person loss our memory after some time and when the person will die then the total memory of that person will be lossed .At this time the backup is very importen for every person because many persons have our data in personal format and they can not tells our password and other important files to other person so if the person will be expire in any condition then the files and ther important documents will be lossed. So ,we have the need of virtual brain

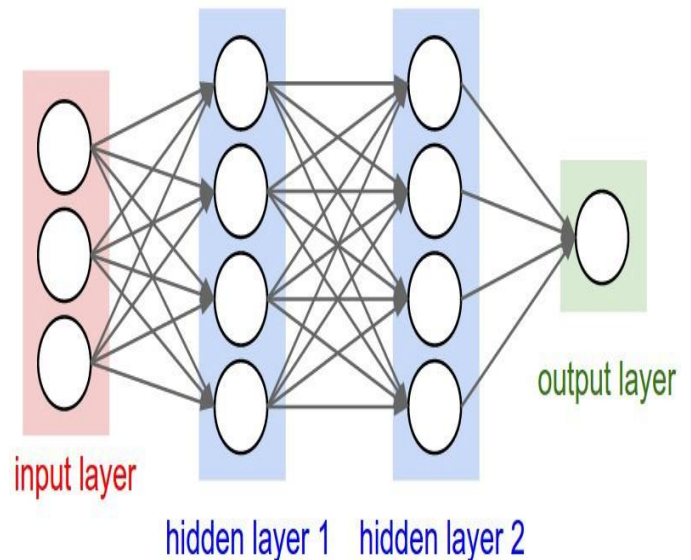
V. Function of Blue Brain

- **Sensor Input**
 It collect the information of the inputs likes images,sounds etc.
- **Interpretation**
 Interpretation of the received input by the brain defining of neurons int he brain.
- **Motor Output**
 It is used for reseiving all the response from the brain that is perform by the brain.

VI. Artificial Neural Network

The Artificial Neural Network (ANN) is a model for information processing that is inspired by how the biological system, the brain, the brain, the process information. The main element of this model is the new structure of the information processing system. It has a large number of highly correlated processing (nerve cells) working in the United Nations to address specific issues. DNA is human to learn by example. ANN is installed for a

particular program, such as marking or parsing data through a learning process. Training in the biological systems involves adjusting synaptic connections between nerve cells. This also applies to AAN.



VII. HOW IS IT POSSIBLE ?

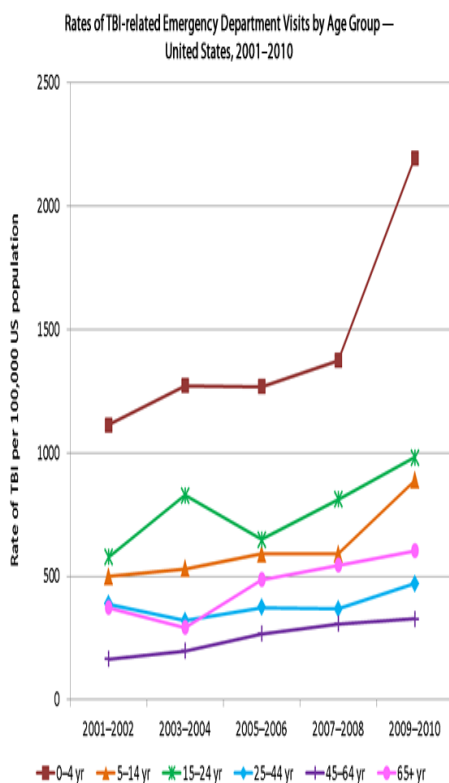
First of all, it is very useful to describe basic ways that a person can be loaded into a computer. The most interesting thing is the use of small robots or nano-paintings. These robots will be small enough to cross our bloodstream. Traveling in the spine and the brain, they will be able to monitor the activity and structure of our central nervous system. They will be able to provide an interface with computers that are as close to ours as we are living in our biological form. The nano's appearance can also scan the structure of our brain carefully, providing a complete reading of the connection between the nerves. They will also record the current state of the brain. This information, when you have entered a computer, can continue to function as we do. Only computers with enough storage and power need electricity. Does the pattern and the condition of the neuronal binding in our brain really build our mind?

Many believe that the majority of people have a soul, while some technicians believe that the forces of the Internet power are contributing to our consciousness. But now we have to think.



VIII. FUTURE PERSPECTIVE

- Prosthetic devices to restore vision, hearing or limb control might be the next step.
- Further in the future, the real dreams would be the realization of the “brain in computer and chip in brain” arrangement.
- This is just ‘Blink of an eye’ there’s lot more to come.



IX. ADVANTAGES

- Remembering things without any effort.
- Making decisions without the presence of any person.
- Using intelligence of person after the death.
- Understanding the activities of animals.
- Allowing the deaf to hear via direct nerve simulation.
- Scientist think that blue brain could also help to cure the Parkinson’s disease.

X. DISADVANTAGES

- We become dependent upon the computers.
- Others may use technical knowledge against us.
- A very costly procedure.
- Computer viruses will pose an increasingly critical threats.

XI. CONCLUSION

Bright blue has become an area of interest. Techniques based on the brain are proposed to improve the brain's energy system. These techniques provide the use of computer as an operator in the system of human consciousness and is used as a management concept. Emphasis after the collapse and pressure to achieve a minimal recovery may result in erroneous removal of the operator. This document mentions brain usage to integrate the brain and technologies that use brain and computer technology in a consistent manner.

XII. ACKNOWLEDGEMENT

I am grateful that you have accepted this topic. I would like to thank IBM (International Business Machines) for the fact that this prototype laptop is also available for their full support to the nervous system. I would also like to thank SGI (Silicon Graphics, Inc.) for their critical initiative to help you visualize the Blue Brains. I would like to thank

Goodman for his long-term support for our recovery efforts and for the knowledge of Blue Gene's initiatives in 2000. I would also like to thank the US Navy Research Service for their support. I thank I. Seghev, who will and will be critical to the success of the project and G. Shepard for his valuable comments on manuscripts.

XIII. Links and Bookmarks

<https://www.google.co.in/search>
<https://www.google.co.in/search?q=artificial+neural+network>

References

- [1] "Engineering Medicine and Biology Society", 2008 EMBS 2008. 30
- [2] The Annual International Conference of the IEEE
- [3] Henry Markram, "The Blue Brain Project", Nature Reviews Neuroscience 2006 February.
- [4] Simulated brain closer to thought BBC News 22 April 2009.
- [5] "ProjectMilestones".BlueBrain.<http://bluebrain.epfl.ch/Jahia/site/bluebrain/op/edit/pid/185>
- [6] Graham-Rowe, Duncan. "Mission to build a simulated brain begins", NewScientist, June2005. pp. 1879-85
BlueGene:<http://www.research.ibm.com/bluegene>.
- [7] The Blue Brain Project:<http://bluebrainproject.ep>